



This home, in the same neighborhood as 1256 Lenhill Court and 1288 Lenox, was recently completed and achieved an Energy Star 5 Star + certification. It features many of the same amenities. French Country design mixed with sustainable and durable material choices work together to make this a luxurious yet environmentally responsible home.

■ Our Approach

Gontina Building & Design focuses on creating spaces that require fewer resources to construct as well as operate. From small remodeling and addition projects to custom homes, Gontina Building & Design approaches each project with an emphasis on artistry, technology and sustainability.

We are committed to creating spaces that immerse the occupant in inspiring, healthy, efficient, and environmentally responsible living with an eye towards the future.

For more information about Gontina Building & Design or for more information on available properties or services visit our website at: www.gontinabuilding.com or call our offices at: 248.246.8031

GONTINA
BUILDING & DESIGN

1006 W. 14 Mile Road, Clawson, MI 48017
248-246-8031 (phone) • 248-246-1159 (fax)
gontinabuilding.com

PLACE
FIRST CLASS
POSTAGE
HERE

GONTINA
BUILDING & DESIGN

Building A Greener Future

Announcing Bloomfield Township's first LEED® homes

The LEED (Leadership in Energy and Environmental Design) Green Building Rating System is the nationally accepted benchmark for the design, construction, and operation of high performance green buildings. Building to these standards results in a healthier, more efficient and comfortable home that is both a sound investment and environmentally friendly.

Making homes sustainable is an important part of fighting climate change, since Americans spend approximately two-thirds of their time at home. The energy used at home makes up more than a quarter of our total carbon footprint. The emissions from American homes alone account for eight percent of the world's greenhouse gas emissions. In response, we need to change the way we build. Gontina Building & Design has solutions.

With Structural Insulated Panels, Insulating Concrete Form foundations, Geo-thermal heating & cooling, Rainwater Harvesting for irrigation and several other eco-friendly features, homeowners can realize immediate savings in monthly operating costs while doing their part to preserve our environment.

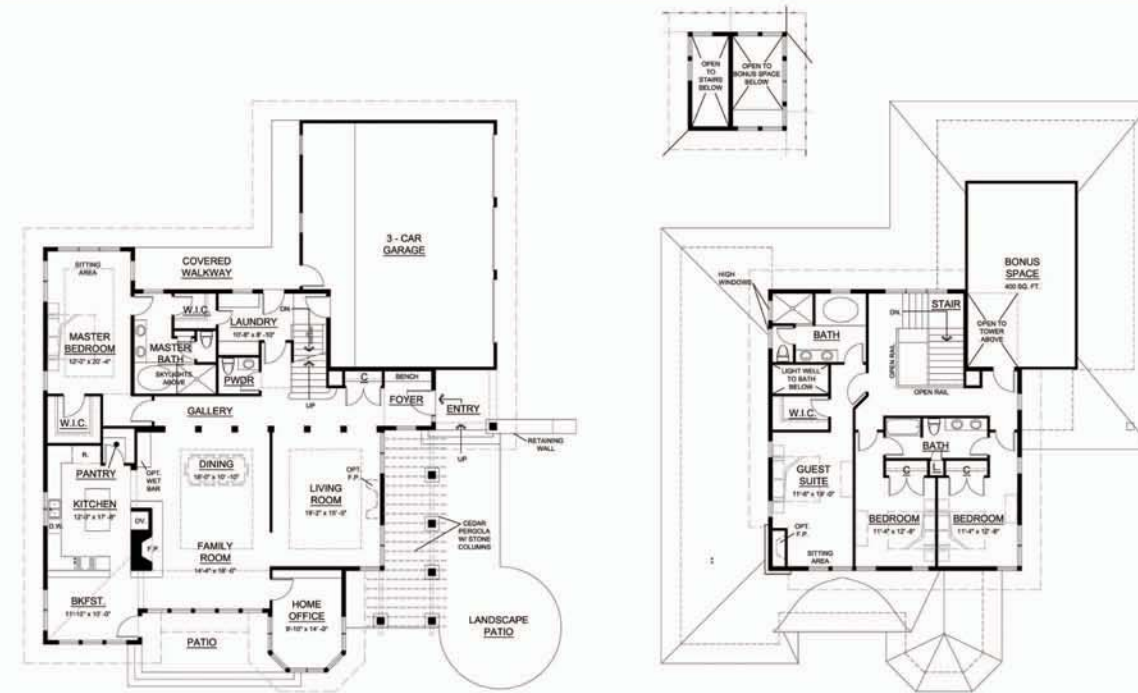
Our latest properties include all of these features and more. 1256 Lenhill Court features 4 bedrooms and 4 bathrooms. 1288 Lenox has 4 bedrooms with 3 bathrooms and a powder room. Both homes are approximately 3,700 square feet, have three car garages with bonus space above and first floor Master Suites. They are situated on roughly one-acre parcels in a wonderful neighborhood with convenient access to many services. Drawings and images are included on the following pages.



New homes under construction



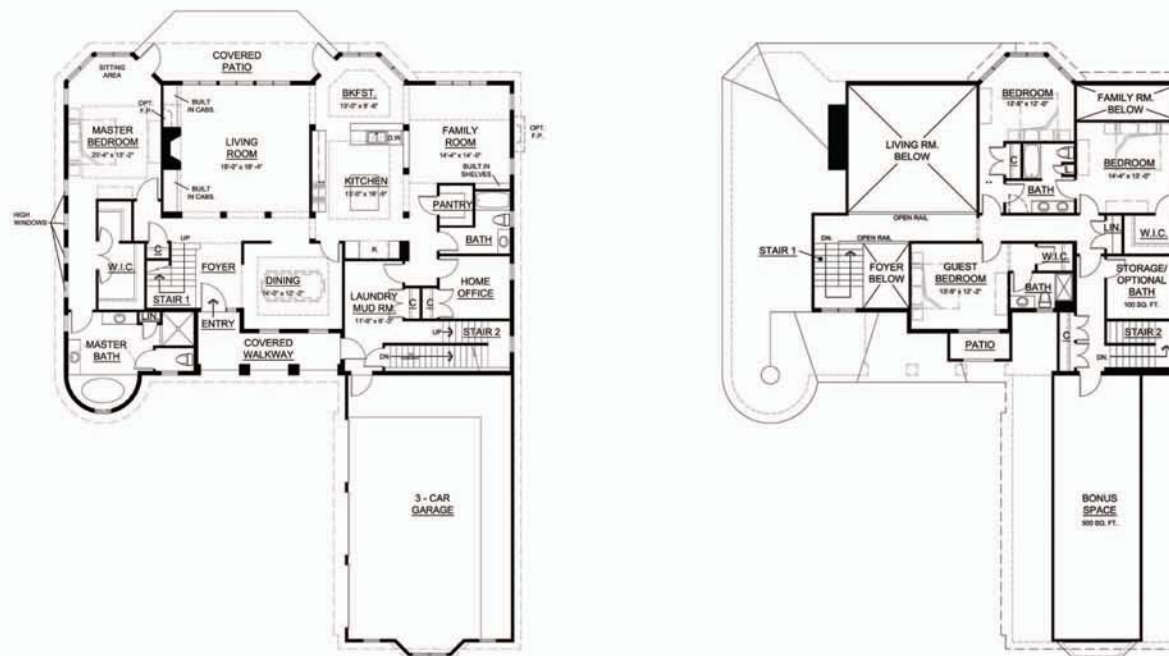
1288 Lenox Road, Bloomfield Township, MI



Characterized by its unique approach to Arts & Crafts design, this home features 4 bedrooms, 3 bathrooms and a powder room. In addition, the home will include a first floor master suite, spacious kitchen and breakfast areas, formal dining and living rooms and home office to make the first floor plan impressive. A unique light well illuminates both the master and guest bathrooms with sumptuous natural lighting. Environmentally friendly materials, such as fiber cement siding and recycled glass countertops round out the unique nature of this home. This home is approximately 3,700 square feet.



1256 Lenhill Court, Bloomfield Township, MI



This European Estate inspired home has a stately presence on this wooded site. With 4 bedrooms and 4 bathrooms it meets the needs of today's families. With space for another bathroom and bonus space above the garage, future needs are handled easily. Featuring a first floor master suite, formal entry foyer, large formal living and dining rooms, with open kitchen and family room, this is a truly inspiring home. Built with Structural Insulated Panels, Insulating Concrete Forms, Geothermal heating and cooling this home makes luxury living more affordable. This home is approximately 3,700 square feet.

New Construction

With our extensive knowledge of the construction process we foster our clients through the sometimes daunting task of new home construction. We believe in a collaborative process to help develop, manage and achieve our clients' ultimate goal of creating the perfect space. We understand the benefits of new materials as well as the importance of time tested methods and our attention to design, detail and planning assures quality construction.

Remodeling or Additions

We can help create a new look or feel for your home. Add that Family Room you have always wanted, or maybe it's time to enlarge the Kitchen and add a Breakfast space. Bring elegance and life to your home with the natural light in the form of a sun room. Perhaps you would like a spacious Master Suite with Vaulted Ceilings and French Doors to the patio. We can turn your dreams and ideas into distinctive plans for home additions and renovations.

Design

Gontina Building & Design is known for creating stunning homes that require fewer resources to build and operate while meeting the needs of your family. Distinctive elevations, open plans with unique features, cozy living spaces and innovative home offices are just a few of the qualities that offer you the best opportunity to maximize both your enjoyment and investment for years to come.

Consultation

Our commitment to "Green" building principles allows us to help you in every facet of your project. Many people want to make a difference but may be overwhelmed by the abundance of information. Our knowledge of alternative methods and materials can help you make choices that improve the performance and overall impact of your next building project.